

# Assets Register

## Objective

To maintain a detailed record of the company's fixed assets by recording depreciation and current asset values, in addition to providing a facility to evaluate remaining usefulness by tracking expenditures incurred or income derived from assets.

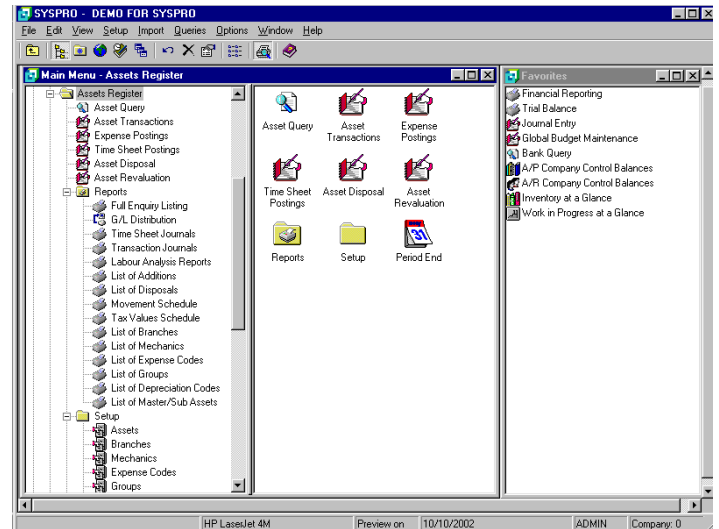
## The Value of SYSPRO Fixed

### Assets Register

- Maintains a register of all assets and their locations
- Tracks expenses incurred for any asset
- Calculates book and tax-based depreciation
- Tracks maintenance history for each asset
- Obtains estimates of the remaining useful "life" of an asset
- Gives reports on disposals, revaluations and/or acquisitions
- Provides detailed reporting and screen queries
- Allows a provision for initial and investment allowances
- Preview of reports to screen and e-mail capabilities

### Matching SYSPRO to Your Business

- Allows for fixed or variable depreciation rates
- Automatically posts monthly provisions to the General Ledger
- Calculates book depreciation and tax allowances using either the straight line or reducing balance method
- Assigns assets to individual branches of the business, and/or user-defined groups & types
- Attaches sub-assets to other assets
- Groups assets for reporting purposes
- Defines variable rates for depreciation up to 14 years
- Records revenue and expense transactions for any asset quickly and easily
- Revalues assets
- Records and tracks maintenance or repair time against each asset
- Calculates profit or loss on the sale of any asset
- Calculates depreciation and tax allowances to-date when initially adding assets



## Audit Trails and Reporting

- Complete audit trails include transaction journals, lists of additions and disposals, and General Ledger Distribution reports
- Has book and tax value schedules
- Creates asset movement reports
- Provides labor analysis reports (for maintenance work)
- Reports on revenue and costs

## Integration

- Integrates with the General Ledger module for asset purchases and disposals as well as with monthly depreciation figures
- E-mail reports with the Office Automation module